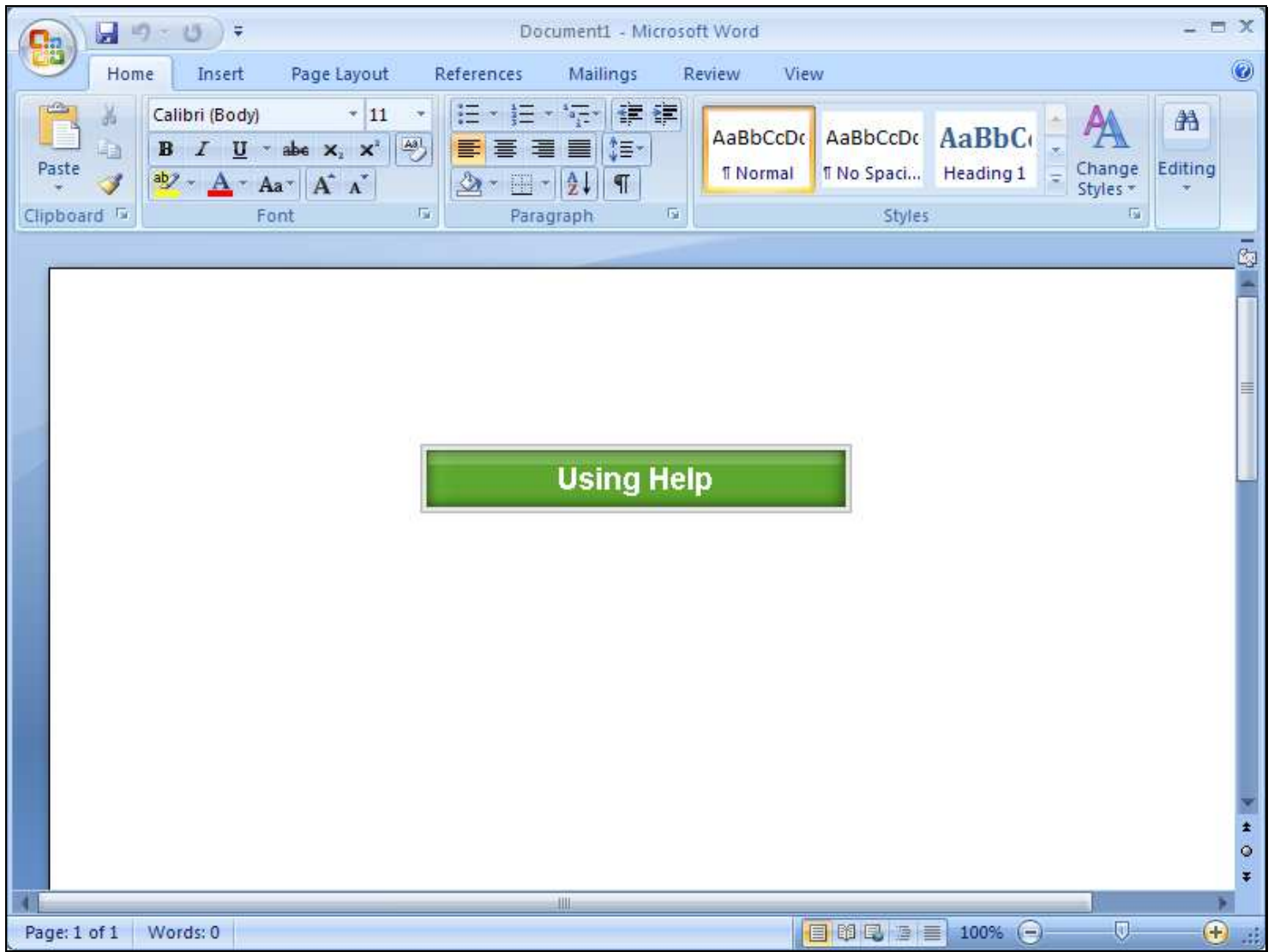
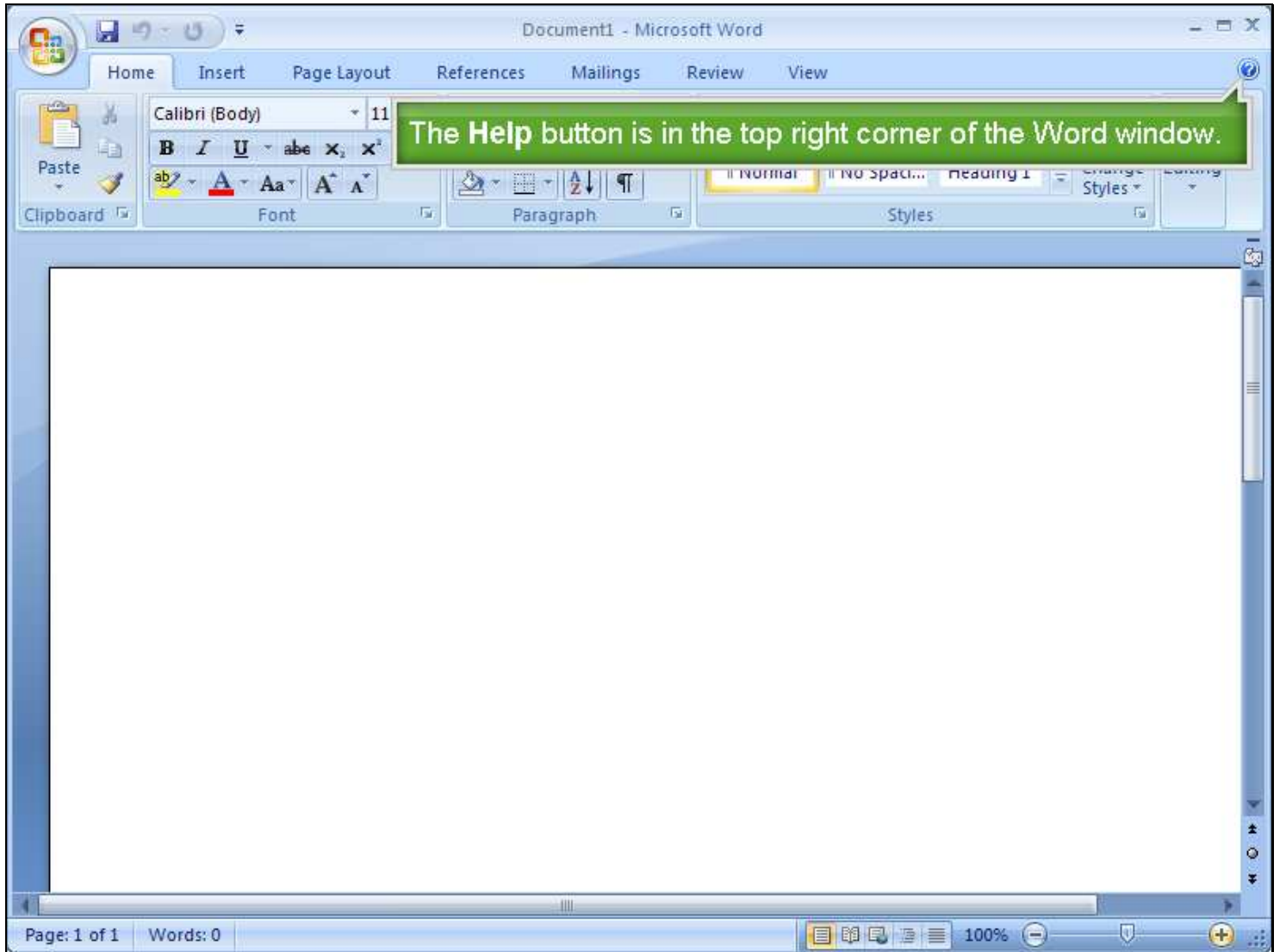


Slide 1 - Slide 1



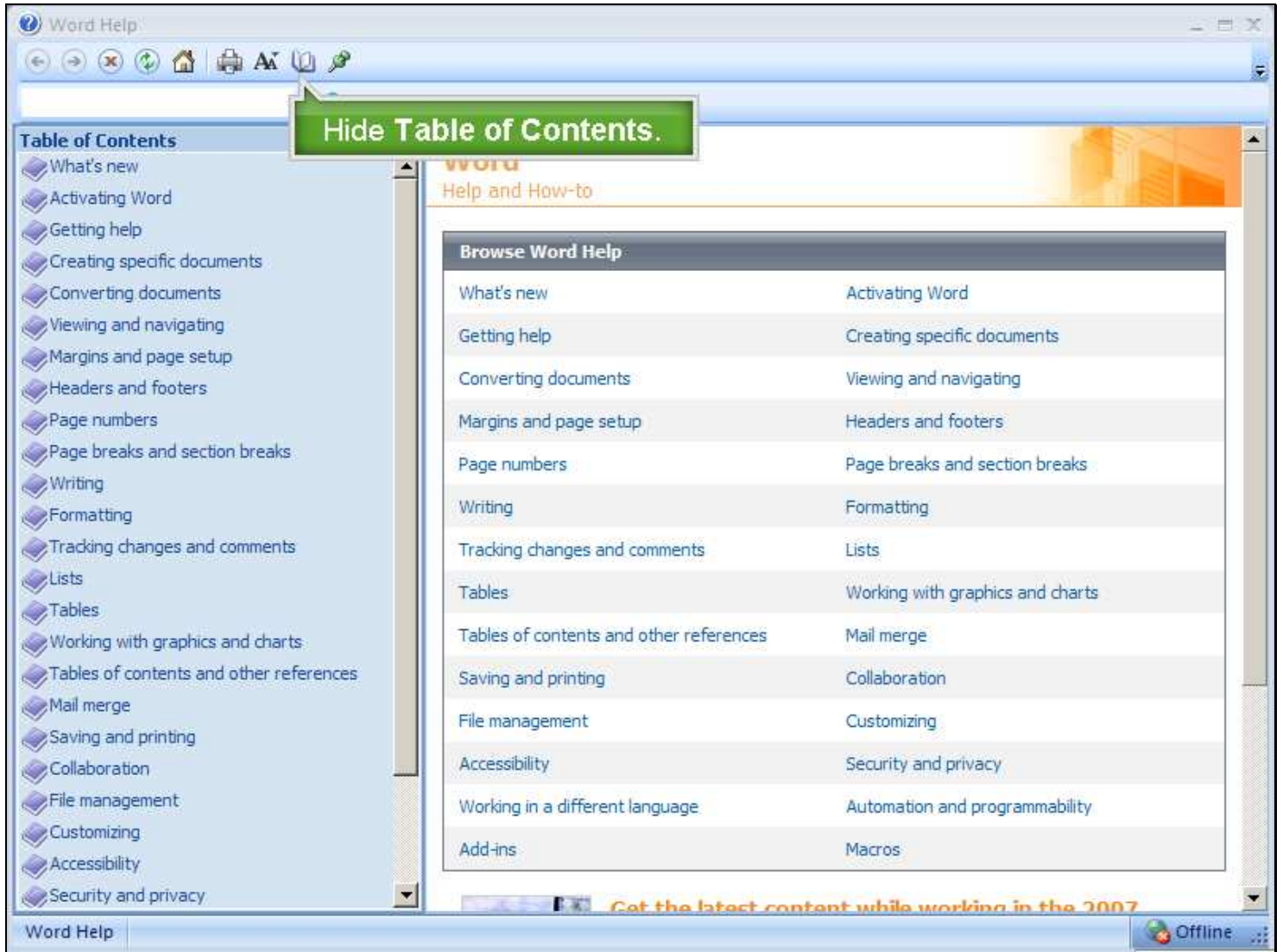
Notes

Slide 2 - Slide 2



Notes

Slide 3 - Slide 3



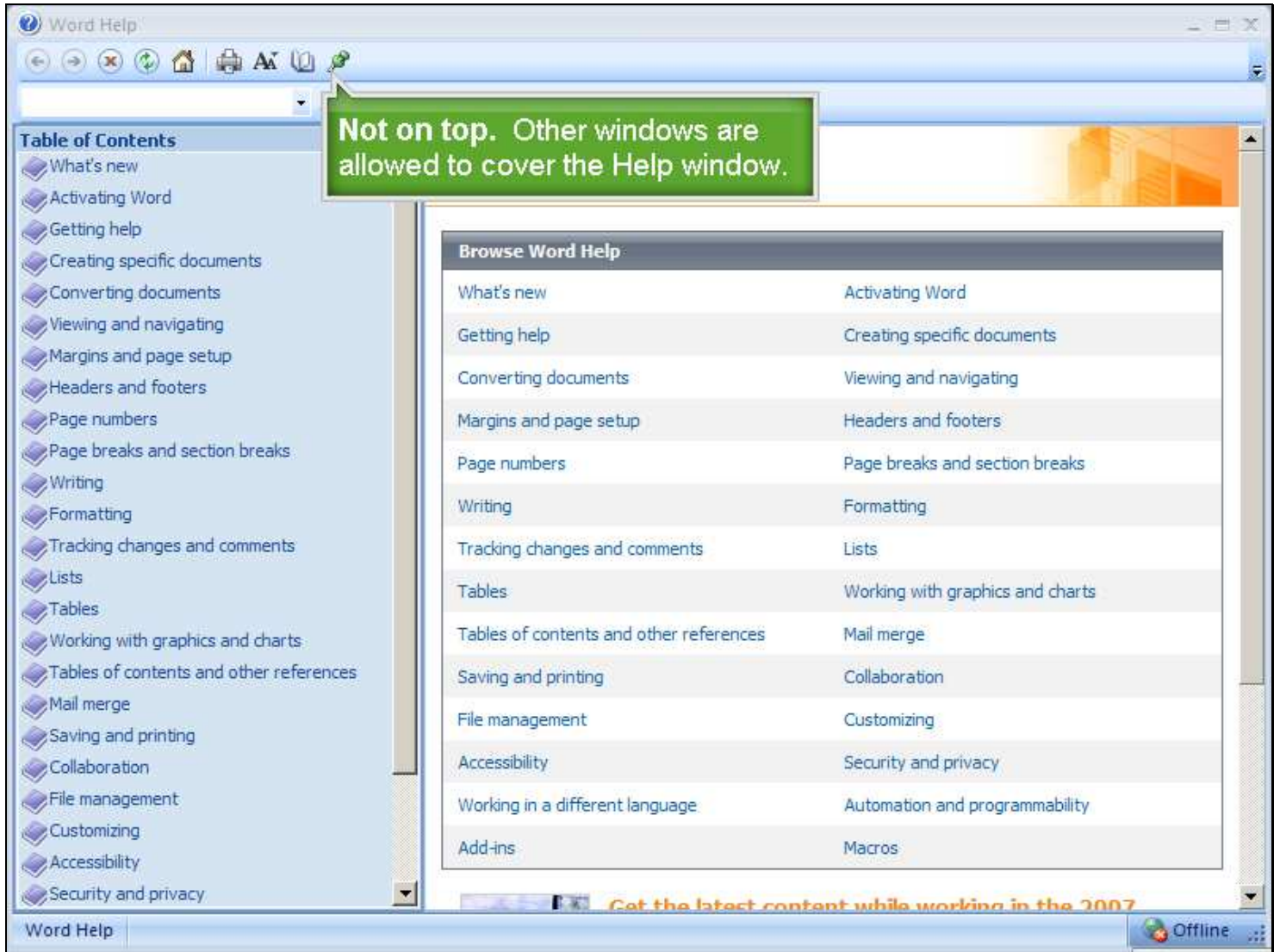
Notes

Slide 4 - Slide 4



Notes

Slide 5 - Slide 5



Notes

Slide 6 - Slide 6

The screenshot shows the Microsoft Word Help window. On the left is a 'Table of Contents' pane with a list of topics. On the right is a 'Browse Word Help' pane showing a grid of topics. A green callout box with white text is positioned over the top of the window, pointing to the 'Keep on top' button in the title bar. The callout text reads: 'Keep on top. Keeps the Help window visible. Resizing and/or moving the Help window can be useful when this feature is in effect.'

Table of Contents

- What's new
- Activating Word
- Getting help
- Creating specific documents
- Converting documents
- Viewing and navigating
- Margins and page setup
- Headers and footers
- Page numbers
- Page breaks and section breaks
- Writing
- Formatting
- Tracking changes and comments
- Lists
- Tables
- Working with graphics and charts
- Tables of contents and other references
- Mail merge
- Saving and printing
- Collaboration
- File management
- Customizing
- Accessibility
- Security and privacy

Browse Word Help

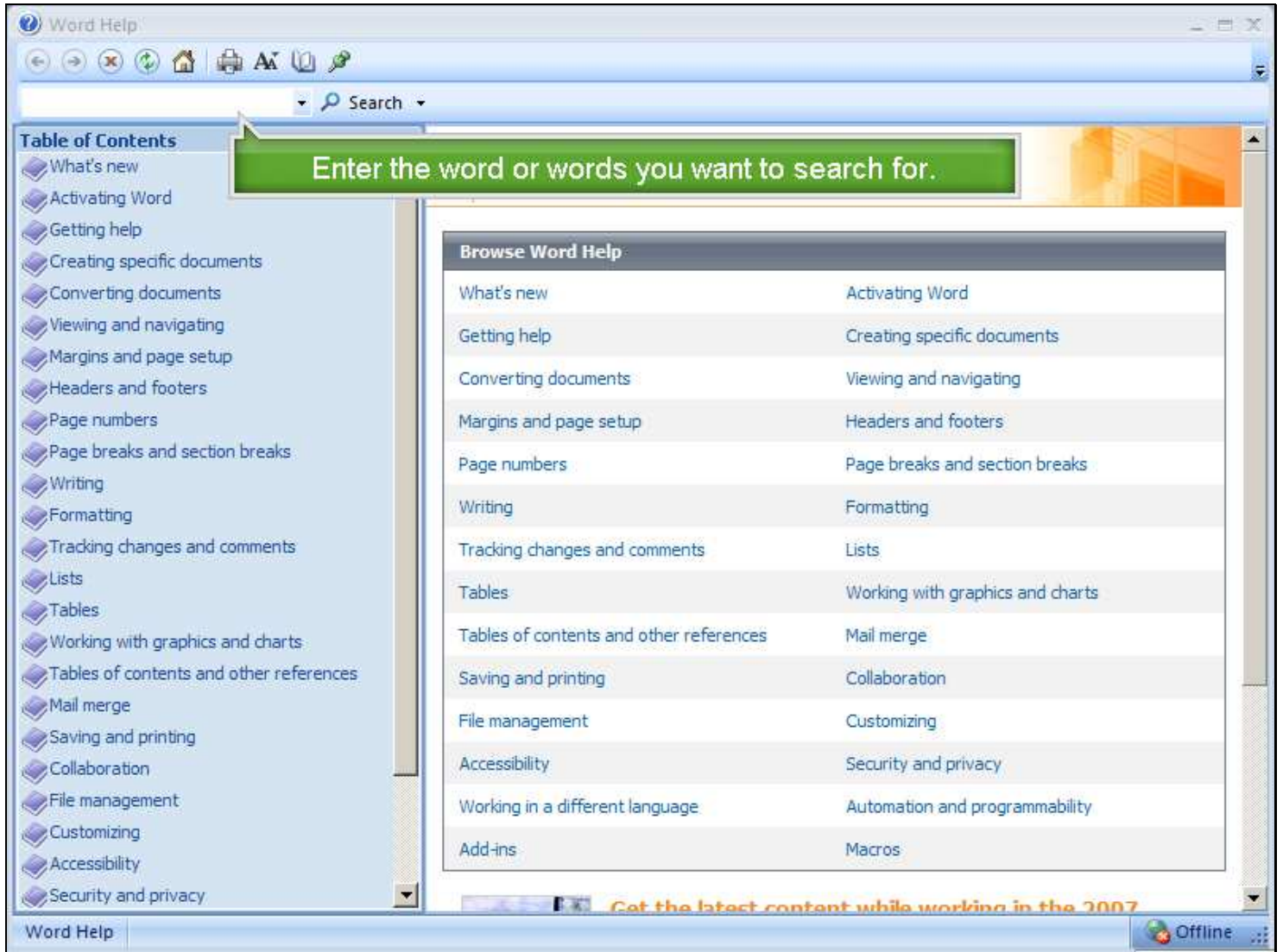
What's new	Activating Word
Getting help	Creating specific documents
Converting documents	Viewing and navigating
Margins and page setup	Headers and footers
Page numbers	Page breaks and section breaks
Writing	Formatting
Tracking changes and comments	Lists
Tables	Working with graphics and charts
Tables of contents and other references	Mail merge
Saving and printing	Collaboration
File management	Customizing
Accessibility	Security and privacy
Working in a different language	Automation and programmability
Add-ins	Macros
Word Demos	Training

Word Help window title bar: Word Help

Word Help window status bar: All Word | Connected to Office Online

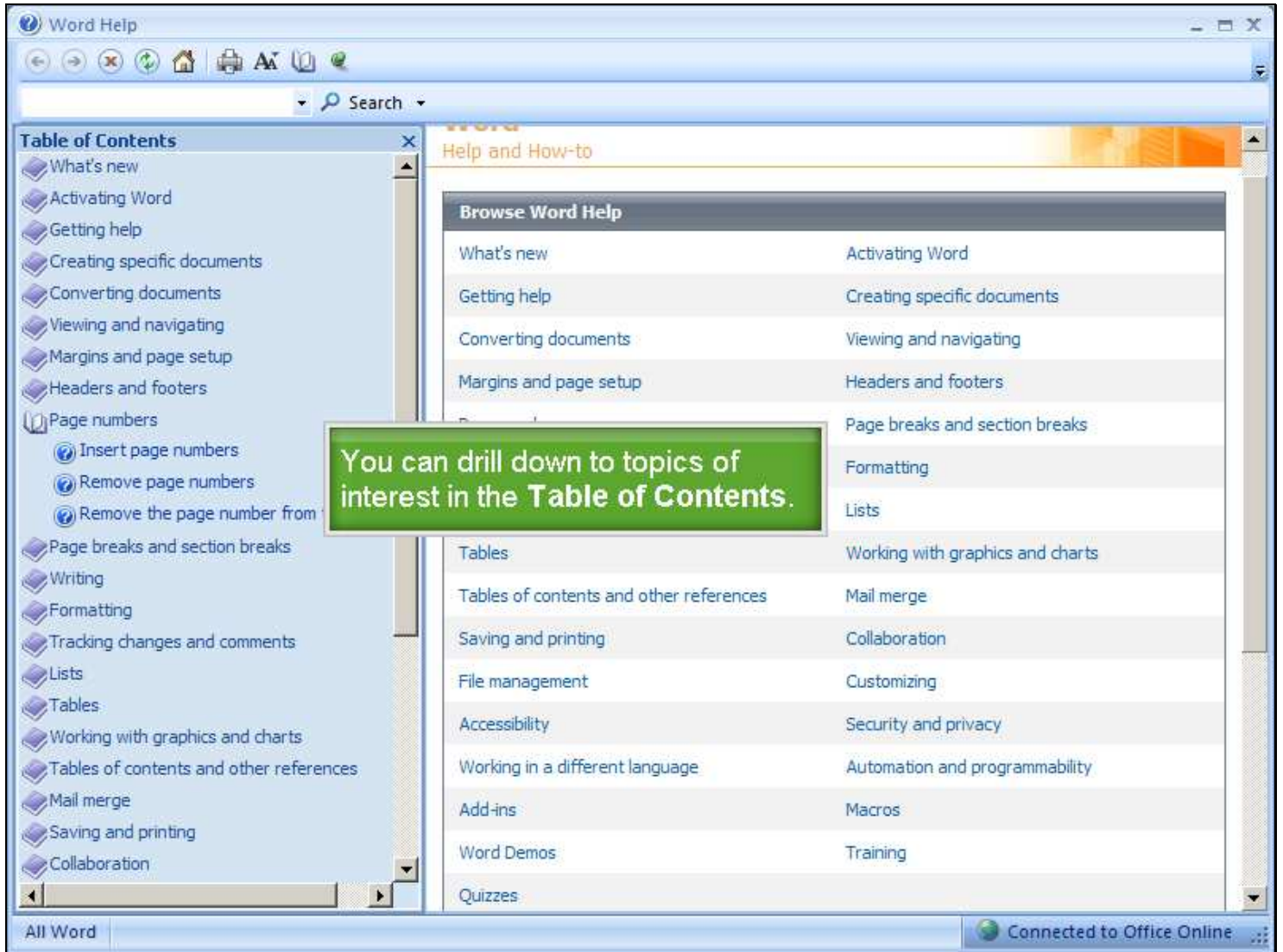
Notes

Slide 7 - Slide 7



Notes

Slide 8 - Slide 8

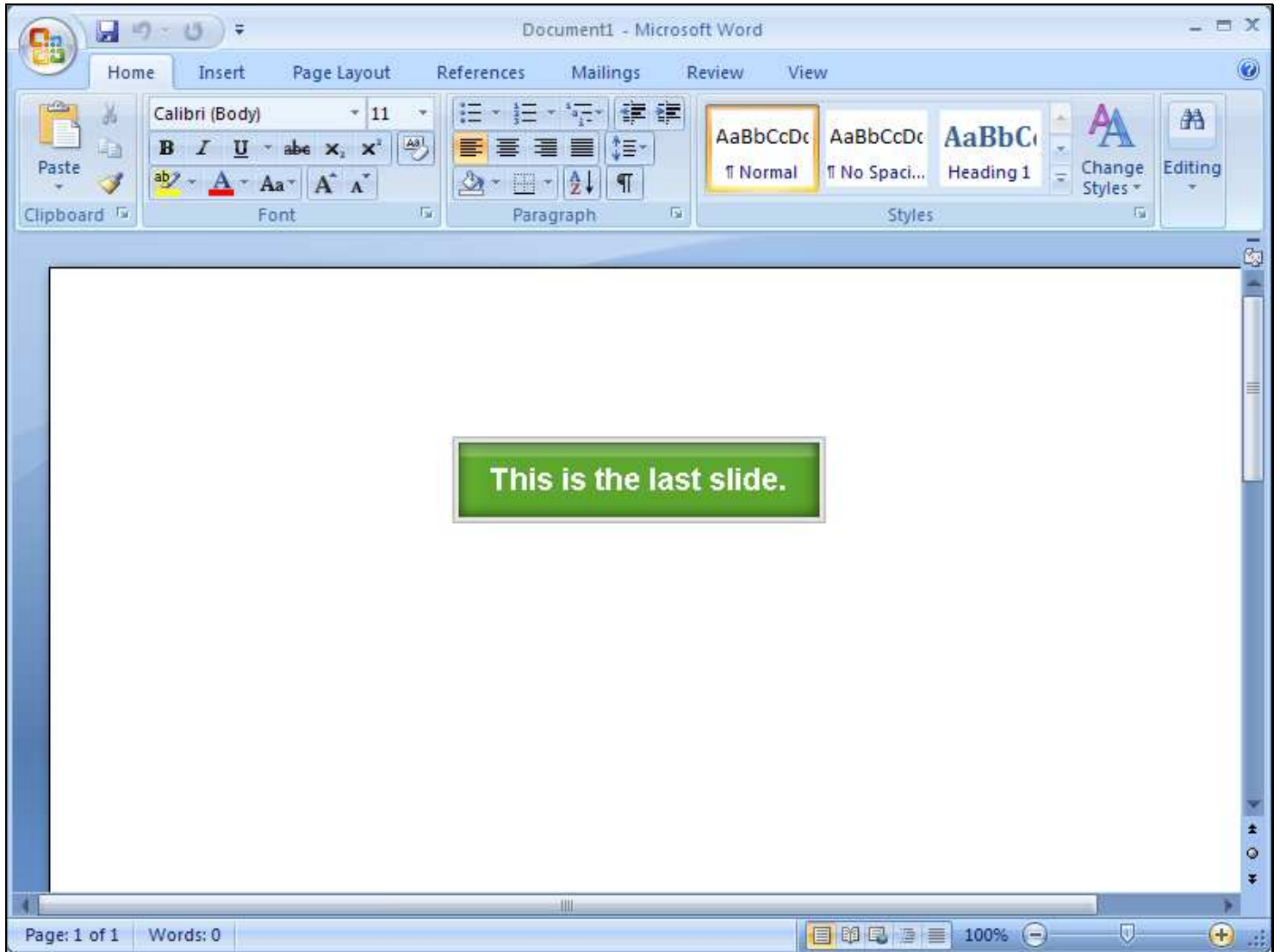


The screenshot shows the Word Help application window. On the left is a 'Table of Contents' pane with a list of topics including 'What's new', 'Activating Word', 'Getting help', 'Creating specific documents', 'Converting documents', 'Viewing and navigating', 'Margins and page setup', 'Headers and footers', 'Page numbers', 'Page breaks and section breaks', 'Writing', 'Formatting', 'Tracking changes and comments', 'Lists', 'Tables', 'Working with graphics and charts', 'Tables of contents and other references', 'Mail merge', 'Saving and printing', and 'Collaboration'. On the right is a 'Browse Word Help' pane displaying a grid of help topics. A green callout box with white text is overlaid on the Table of Contents, stating: 'You can drill down to topics of interest in the Table of Contents.'

What's new	Activating Word
Getting help	Creating specific documents
Converting documents	Viewing and navigating
Margins and page setup	Headers and footers
	Page breaks and section breaks
	Formatting
	Lists
Tables	Working with graphics and charts
Tables of contents and other references	Mail merge
Saving and printing	Collaboration
File management	Customizing
Accessibility	Security and privacy
Working in a different language	Automation and programmability
Add-ins	Macros
Word Demos	Training
Quizzes	

Notes

Slide 9 - Slide 9



Notes
